



Agilent M9361A PXI Downconverter

DISCOVER the Alternatives...

Industries and Applications

- Aerospace and defense
- Wireless communications
- Radar and wideband signal capture

Product Description

The M9361A is a one-slot 3U PXI Downconverter that converts microwave signals from 2.75 GHz to 26.5 GHz into baseband frequency signals centered at an IF frequency of 500 MHz. The built-in pre-amp enables very low level signal measurements, down to -160 dBm, and built-in calibration simplifies system power budget calculations.

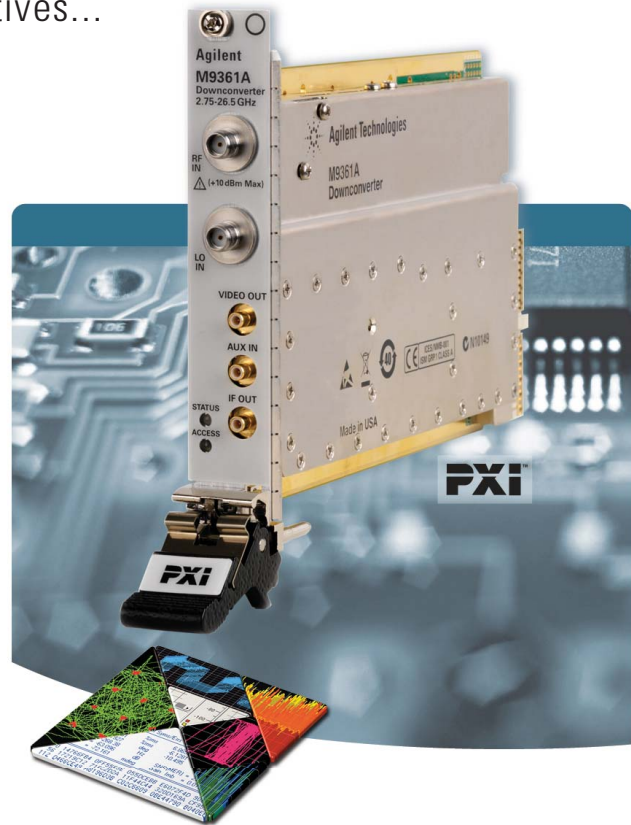
Models

M9361A PXI Downconverter

Main Features and Benefits

Product features	Your benefit
Frequency range	2.75 GHz to 26.5 GHz
250 MHz bandwidth	Able to capture wide bandwidth signals
Built-in pre-amp	Able to acquire low-level signals
40 dB solid state IF attenuator with 0.5 dB steps	Fast IF power control
Auxiliary input/switch for signal routing	Effectively gives you the option to route signals directly from other downconverters to a digitizer without external switching
Multiple programmatic interfaces	Easy integration into existing test environments and reduced development time
PXI form-factor	Conforms to Modular Open Systems Approach (MOSA)

Chassis slot compatibility: cPCI (J1), PXI-1, PXI Hybrid



... Agilent **MODULAR** Products Specifications

Hardware	
Size	1 slot 3U
Frequency range	2.75 GHz to 26.5 GHz
Operating range	< 9.5 GHz: -160 dBm to -30 dBm, (nominal) 9.5 GHz to 26.5 GHz: -146 dBm to -30 dBm, (nominal)
Bandwidth (3 dB)	250 MHz, min
Impedance	50 Ω, (nominal)
RF to IF Gain	38 dB, (nominal)
Center frequency (user adjustable)	500 MHz, (nominal)
Residuals, RF and LO input terminated	-75 dBm
LO input frequency range	3 GHz to 10 GHz
LO input power	+15 dBm ± 2 dB
Impedance	50 Ω, (nominal)



Agilent Technologies

Software

The M9361A Downconverter is supplied with a comprehensive portfolio of module drivers, documentation, examples, and software tools to help you quickly develop test systems with your software platform of choice.

A soft front panel interface is provided to monitor and control the PXI Downconverter with the following functions:

- Setting input frequency and level
- IF Path selection: Normal/AUX IN
- Setting attenuator levels
- Monitoring hardware status

Supported operating systems	Microsoft Windows® XP (32-bit), Microsoft Windows® Vista (32/64-bit), Microsoft Windows® 7 (32/64-bit)
Standard compliant drivers	IVI-COM, IVI-C, LabVIEW, MATLAB
Supported application development environments (ADE)	VisualStudio® (VB.NET, C#, C/C++), VEE, LabVIEW, LabWindows/CVI, MATLAB
Agilent IO Libraries	Includes: VISA Libraries, Agilent Connection Expert, IO Monitor

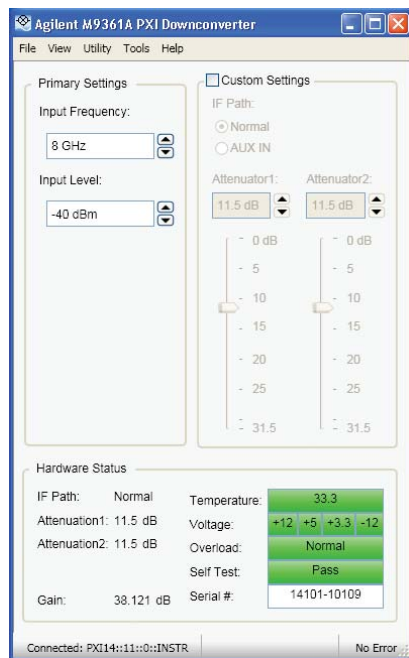


Figure 1. Agilent M9361A PXI Downconverter, software interface.

M9361A Downconverter (2.75 GHz to 26.5 GHz)

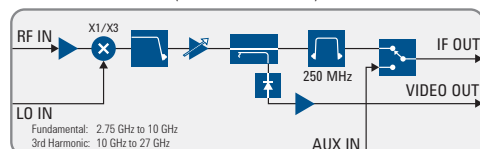


Figure 2. Simplified block diagram of the M9361A PXI Downconverter.

Ordering Information

Typical Product Configuration

Model	Description
M9361A	PXI Downconverter: 2.75 GHz to 26.5 GHz

Related products

M9302A	PXI Local Oscillator: 3 GHz to 10 GHz
M9202A	PXIe IF Digitizer: 12-bit, 2 GS/s
M9360A	PXI Attenuator/Preselector: 100 kHz to 26.5 GHz
M9351A	PXI Downconverter: 50 MHz to 2.9 GHz
M9392A	PXI Vector Signal Analyzer: 50 MHz to 26.5 GHz
M9018A	18-slot PXIe Chassis
M9036A	PXIe Embedded Controller

Accessories

Software, example programs, and product information on CD
Cables

Advantage Services: Calibration and Warranty

Agilent Advantage Services is committed to your success throughout your equipment's lifetime.

M1282A	Annual calibration
R-51B-001-3C	1 year return-to-Agilent warranty extended to 3 years
R-51B-001-5C	1 year return-to-Agilent warranty extended to 5 years

Discover Agilent

www.agilent.com
www.agilent.com/find/modular
www.agilent.com/find/m9361a
 USA: (800) 829-4444



For more information on Agilent Technologies' products, applications, or services, please contact your local Agilent office. The complete list is available at: www.agilent.com/find/contactus

PICMG and the PICMG logo, CompactPCI and the CompactPCI logo, AdvancedTCA and the AdvancedTCA logo are US registered trademarks of the PCI Industrial Computers Manufacturers Group. "PCIe" and "PCI EXPRESS" are registered trademarks and/or service marks of PC-SIG. Microsoft, Windows, Visual Studio, Visual C++, Visual C#, and Visual Basic are either registered trademark or trademarks of Microsoft Corporation in the United States and/or other countries.

Product specifications and descriptions in this document subject to change without notice.

© Agilent Technologies, Inc. 2011 Printed in USA, November 27, 2011
5990-6060EN



Agilent Technologies